

PK Encryption

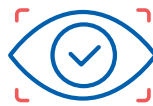
Enterprise Data Protection with Complete Administrative Control

Define granular enterprise data protection policies, including complete administrative control, and protect your sensitive data at the element level wherever it is stored.

PK Encryption protects your business from financial and brand damage by ensuring that your sensitive information is encrypted with the best technology available.



PROTECT



CONTROL



AUTOMATE

PK Encryption Protects with Precision

Data is the new business currency, and protecting collected personal data benefits both the individuals and the organizations using the data. With PK Encryption, powered by Dataguise and PKWARE technologies, businesses can encrypt sensitive data in files and databases—as well as data that is being transmitted or moved—by converting real data values into unreadable values and providing decryption only for those with properly approved access.

3 out of 4 of PKWARE users choose to protect their data with encryption.



Encryption Options

Persistent File and Email Encryption

- Apply protection to hundreds of file types so sensitive information stays encrypted no matter where it is stored, shared, or copied
- Seamlessly and securely send end-to-end encrypted emails internally and externally while preserving user workflows

Format-Preserving Encryption

- Protect data in use and at rest when it's accessed through applications while preserving the formatting and length of the original data

Dynamic Data Encryption in Motion

- Encrypt data while it's in motion, especially for migration or an ETL process, and manage it in a single automated encryption workflow

Transparent Data Encryption

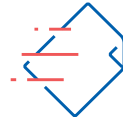
- Data is encrypted at the block level by a file system driver, between the operating system and the file system. Agents perform automatic encrypt/decrypt operations as data is written/read across the network



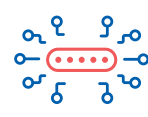
Persistent File
and Email
Encryption



Format-
Preserving
Encryption



Dynamic Data
Encryption in
Motion



Transparent
Data
Encryption

The Broadest Encryption Platform

- Encrypt structured, semi-structured, and unstructured data for production and test environments
- Encrypt sensitive data in files, databases, on-premises and cloud stores of all major cloud players, relational databases, file shares, Hadoop, and more.

“PKWARE has helped address our concern for protecting sensitive documents being sent by email. Attachments can be encrypted automatically, which not only saves time, but also ensures that users don't forget to protect them.”

Abdul Azeez Panambron
IT Manager, Hidada

Maintain Control Wherever Data is Shared

- Keep sensitive data safe even when it's sent to users outside the organization.
- Provide controlled mechanisms for decrypting and discovering data that is encrypted by third-party applications.
- When an authorized sender attempts to transmit unencrypted sensitive information, PK Encryption automatically encrypts the message for the recipient using a public key or a unique Smartkey, limiting the opportunity for data loss or misuse.
- Encrypt sensitive elements in unstructured files and cloud storage objects, and sensitive columns in databases and structured files.



PKWARE
gives you the
confidence
to act on data
in the best
interests of your
organization
and the people
who entrust you
with their
data.

Extensive Encryption Capabilities and Protection Against Data Loss

- Automate policy-based, element-level encryption for sensitive data in TXT, AVRO, Sequence, RC, ORC, MSAON, XML file formats, and more.
- When an authorized sender attempts to transmit unencrypted sensitive information, PK Encryption automatically encrypts the message for the recipient using a public key or a unique Smartkey, limiting the opportunity for data loss or misuse.

PK Protect: Automate enterprise-wide location and monitoring of sensitive data, identity creation, data classification, and policy-based data protection techniques—assuring complete privacy for individuals and protection of organizational personal data vulnerabilities.



PK discovery



PK classification



PK masking

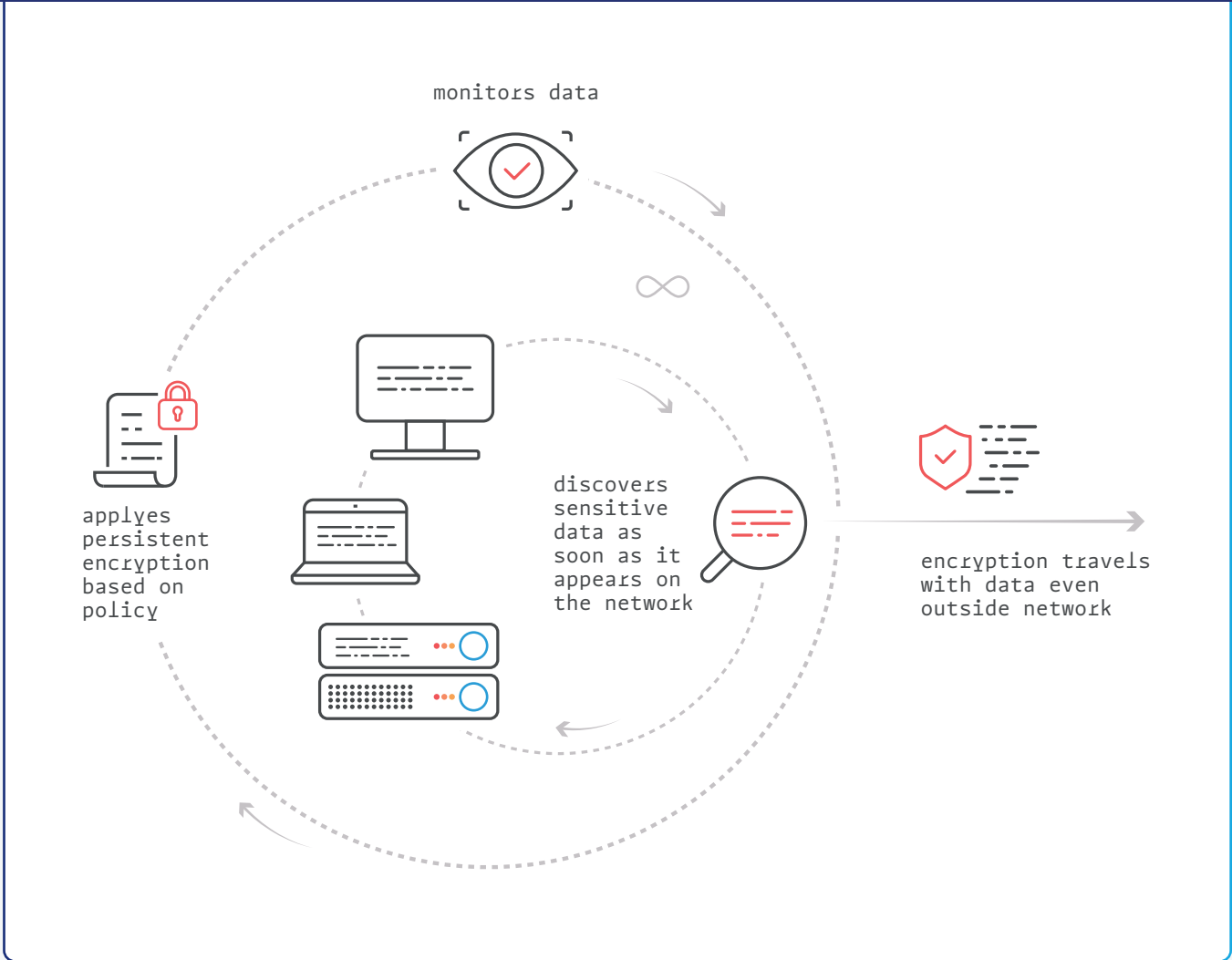


PK encryption



PK privacy

PK Encryption in Action



Ready To See It Live? Contact Us!



pkware.com/demo



866-583-1795



201 E. Pittsburgh Ave.
Suite 400
Milwaukee, WI 53204

Follow Us



[/company/PKWARE](https://www.linkedin.com/company/pkware)



[facebook.com/PKWARE](https://www.facebook.com/PKWARE)



[@PKWARE](https://twitter.com/PKWARE)